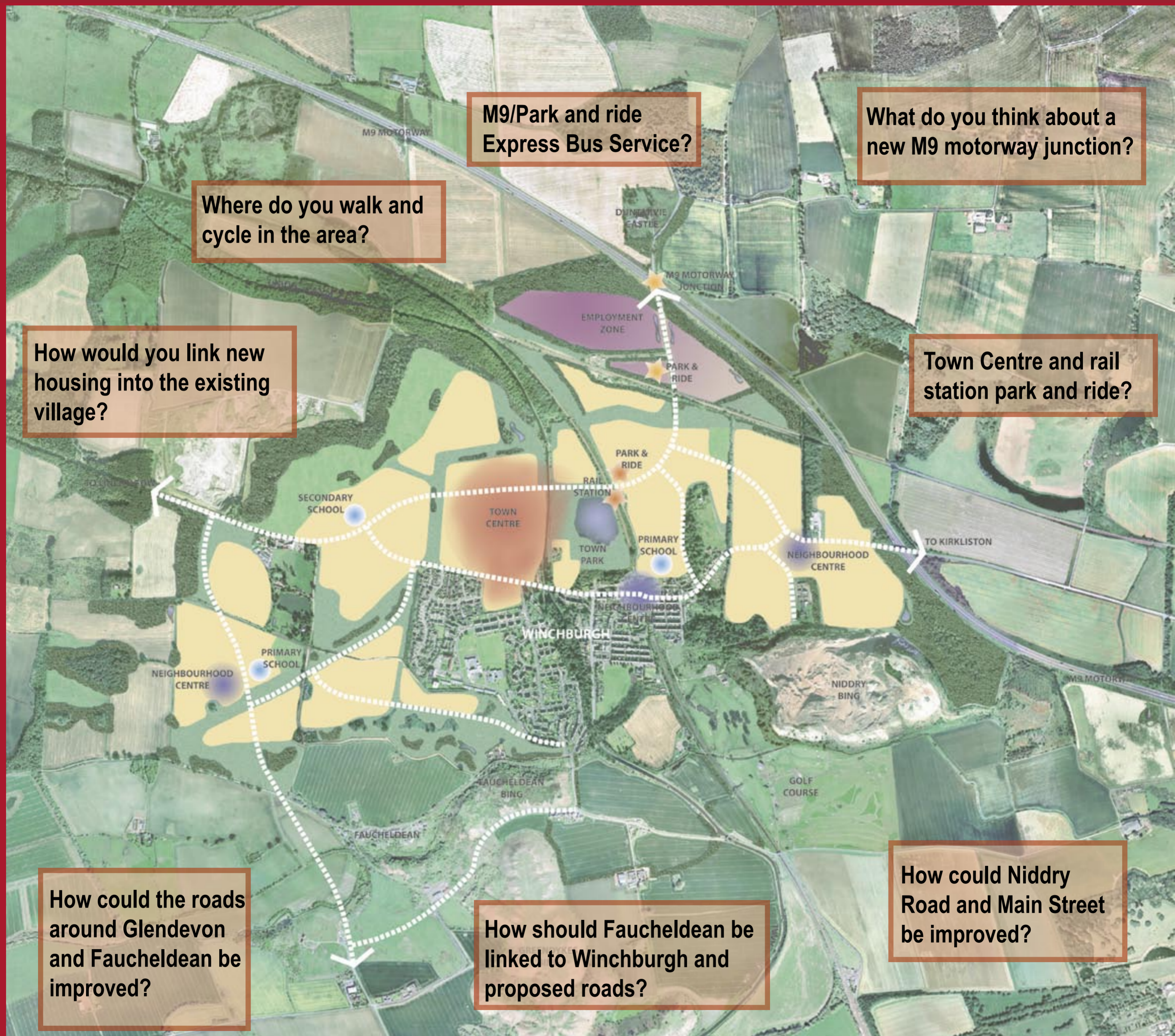


WHAT DO YOU THINK ABOUT

TRANSPORT?

February 2005 Public Meetings

WINCHBURGH DEVELOPMENT INITIATIVE



- Can priority be given to buses, cyclists and pedestrians?
- How could bus routes, facilities and services be improved?
- How good is the parking in Winchburgh?
- Construction
- Where do you tend to travel to/from?

- Where, and how, do you travel to work?
- Can links between Broxburn and Winchburgh be improved?
- What kind of journeys do you make each day?
- What problems do you have accessing Winchburgh at the moment? by car? by bus?